

Angular Malefics

In Good and Bad Celestial States

The link between Longevity and Short Life?

Clélia Romano copyright 2010

revised 2012

Mars and Saturn's position was compared in 113 natives chart who lived more than 80 years to other 89 charts of people who died before their 30th birthday.

Any statistic was done, since the population was too small to enable some.

It is a fact that death, like all the accidents in the native's life is linked to complex configurations and the existence of a malefic in some angle, even in bad celestial conditions, has not enough strength to determine by itself how long the native will live.

The matter of life span is a difficult, complex and a tricky one.

Anyway I asked to myself in which of the groups would we find more detrimental or domiciliated angular malefics. And I reached some answers that I'll present in the following pages.

On The Material and Study

Using Astrodatbank software I put together charts of people who died before the 30th year of age having in their charts angular malefics. I'll call this group, Group I.

I did the same with the other group: the one with high range of longevity, which I'll call Group II.

Group 1 was composed by 636 persons, but only 89 had at least one of the malefics in angular houses using the criteria of whole signs and quadrant divisions.

So, it represents approximately 7% of cases in which a malefic planet was found in an angular place: it is a minority.

The same happened in Group II: I got a general population of 1064 charts, but again only 113 charts obeyed the criteria of having at least one of the malefics in angular position: 9% of the whole population, a result near to the one obtained in Group I.

Then we can say that a malefic in angular position is not related with life span as a general case.

Usually the astrologers pay a big attention to an angular malefic, but without the proper configuration we are not able to say anything. This consciousness is not always present in the student's mind even if it looks quite obvious to the experienced astrologer.

As to the question of a malefic in good celestial state appearing more often in Group II than in Group I I got some clear results but some others are very difficult to understand, requiring more studies in largest populations.

For example, Saturn gave a very clear answer:

In Group II Saturn appeared in good cosmic state more than twice than in Group I.

Mars did not give the same clear results. The difference between a dignified or a detrimental Mars in an angle seemed to be almost indifferent, and this is difficult to understand.

Some qualitative answers could be pointed out. But they are risky and I'm aware that they have to be taken as simple hypothesis since we are dealing with a complex matter and using a small population to generalize any conclusion.

This will not be a long winded lecture and the important thing now is to present the numbers and the graphics I obtained.

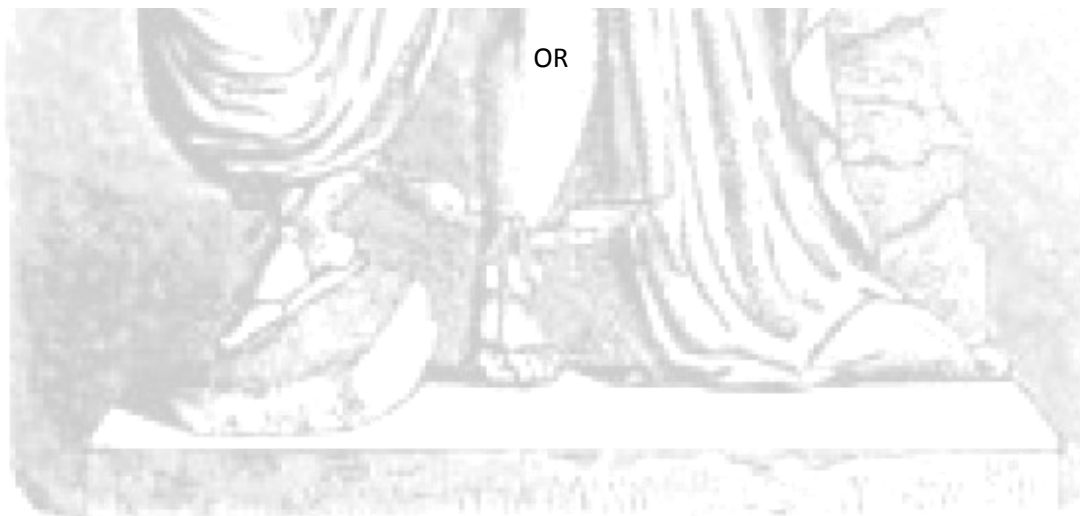
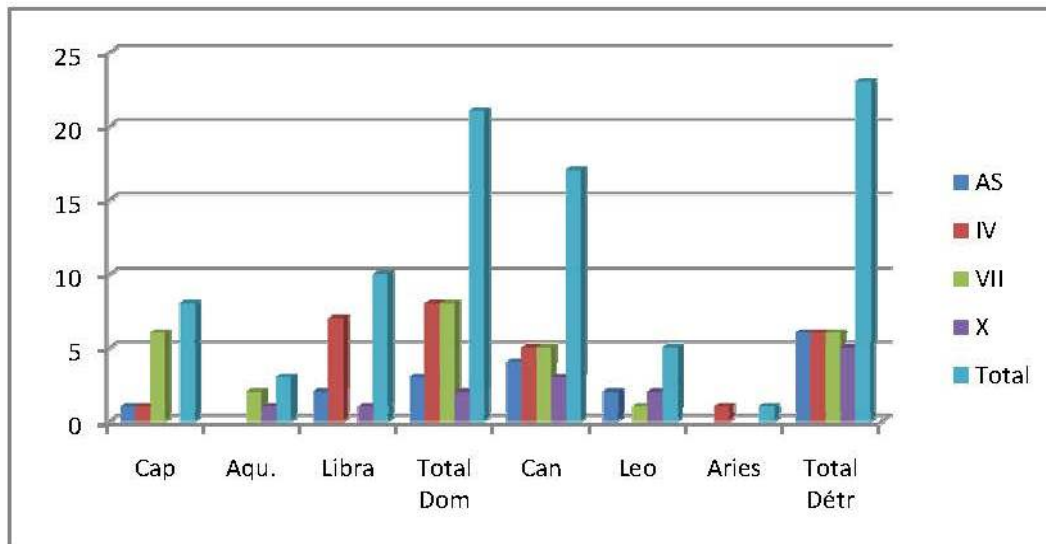
The Results and Graphics

Following, I'll present graphically how many times **Saturn and Mars** appeared in the angles and in what houses they appeared in. The question if they were in their domicile, detriment, exaltation and fall in both Groups will be presented as well.

I'll initiate with **Saturn's results**.

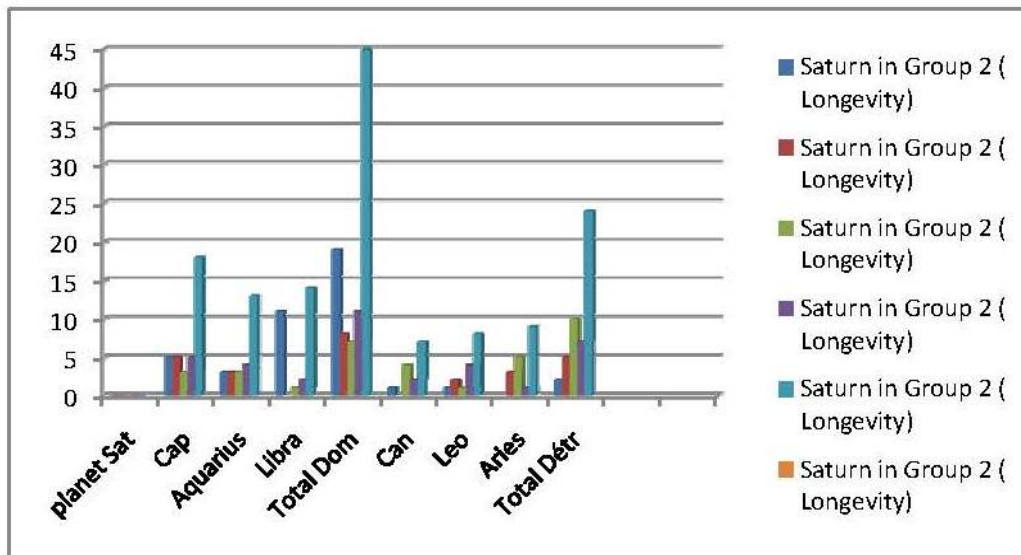
Saturn in the Group 1 (natives deceased in youth)

planet Sat	AS	IV	VII	X	Total
Cap	1	1	6		8
Aqu.			2	1	3
Libra	2	7		1	10
Total Dom	3	8	8	2	21
Can	4	5	5	3	17
Leo	2		1	2	5
Aries		1			1
Total Détr	6	6	6	5	23



Saturn in Group 2 (Longevity)

planet Sat	AS	IV	VII	X	Total
Cap	5	5	3	5	18
Aquarius	3	3	3	4	13
Libra	11		1	2	14
Total Dom	19	8	7	11	45
Can	1		4	2	7
Leo	1	2	1	4	8
Aries		3	5	1	9
Total Détr	2	5	10	7	24



As I said before we can see that the amount of natives who lived few years has Saturn in his domiciles almost half of the times than the group of natives who lived many years had. The difference between then was of 21 versus 45.

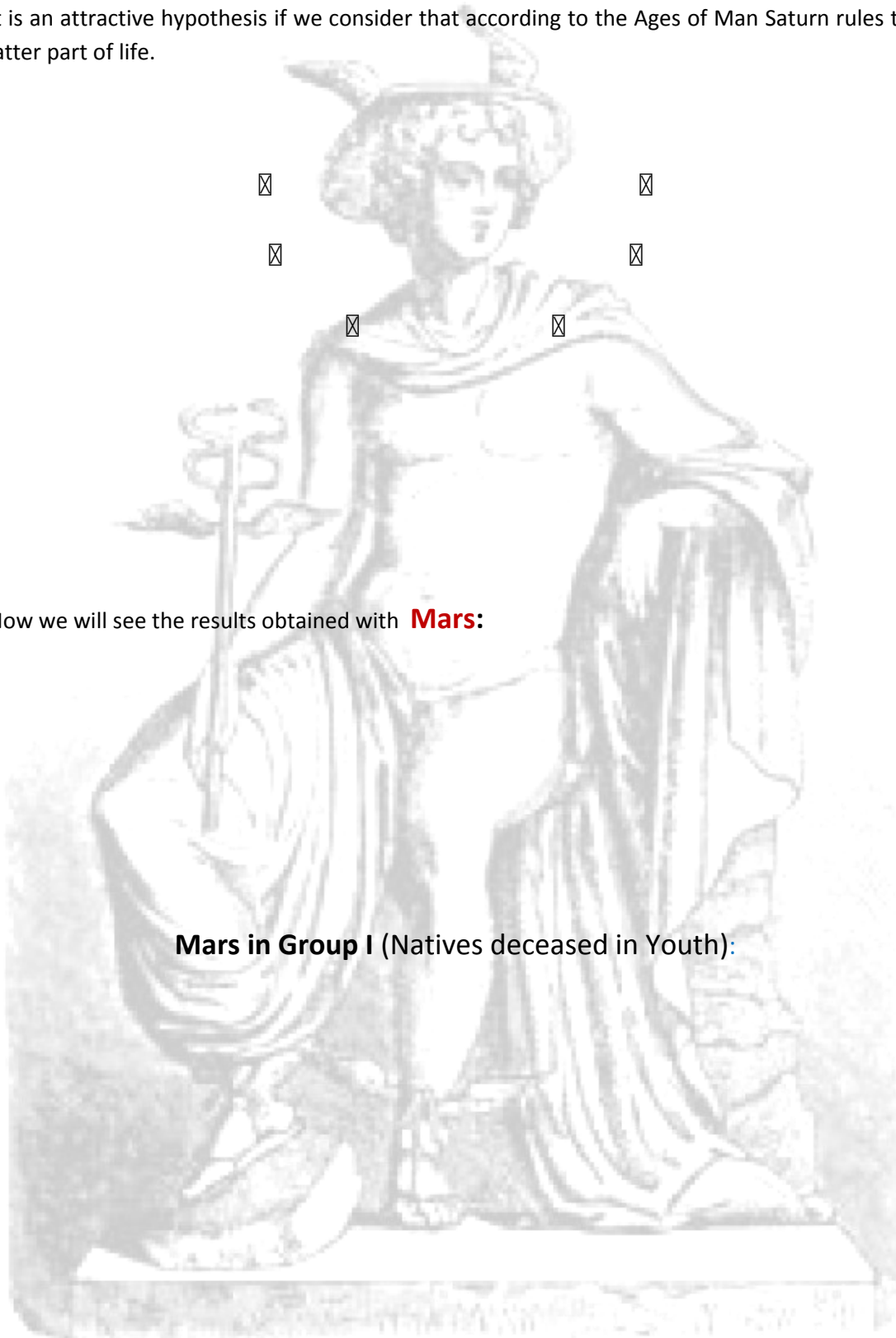
Even taking into account that the Group II is a little bigger than Group I, the difference is still expressive.

It seems pretty clear that Saturn in his domiciles and in angles is much less harmful (If not protective).

But we cannot say that to have Saturn out of its dignities can kill, since the amount of people having Saturn in angles in bad essential dignities did not show any difference in the amount of life span.

This is quite interesting and maybe it represents that after youth Saturn role is highlighted diminishing or increasing life span.

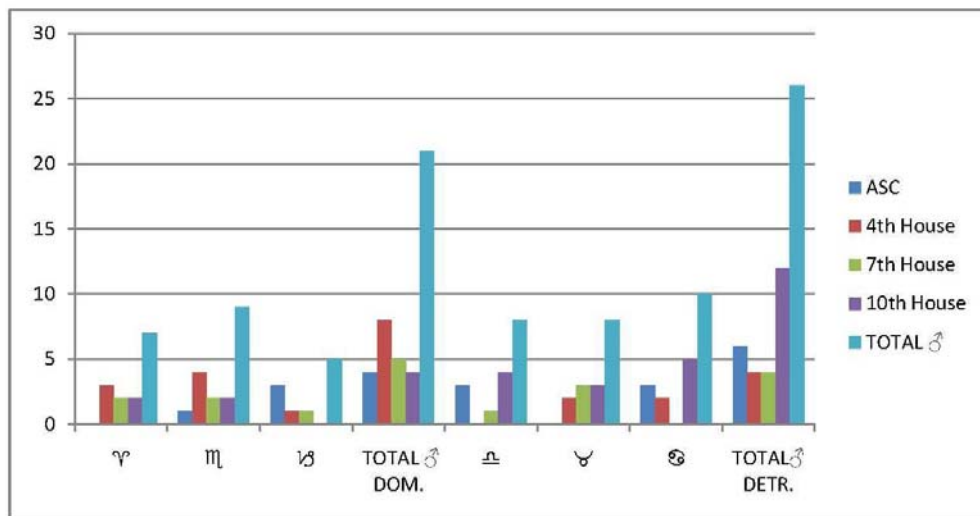
It is an attractive hypothesis if we consider that according to the Ages of Man Saturn rules the latter part of life.



Now we will see the results obtained with **Mars:**

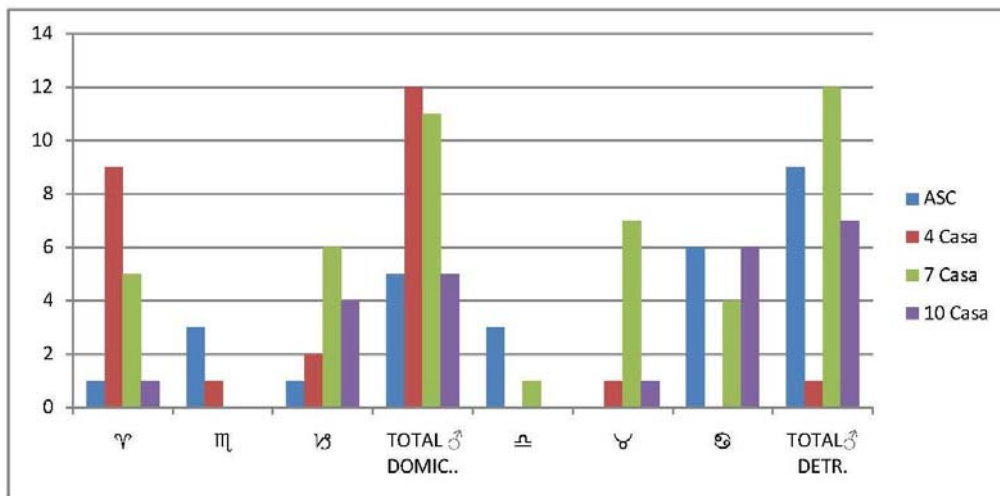
Mars in Group I (Natives deceased in Youth):

Planet ♂	ASC	4th House	7th House	10th House	TOTAL ♂
☿		3	2	2	7
♈	1	4	2	2	9
♉	3	1	1		5
TOTAL ♂ DOM.	4	8	5	4	21
♊	3		1	4	8
♌		2	3	3	8
♍	3	2		5	10
TOTAL ♂ DETR.	6	4	4	12	26



Mars in Group II (people who lived more than 80 years)

	ASC	4 Casa	7 Casa	10 Casa	TOTAL ♂ por Signos
♏	1	9	5	1	16
♍	3	1			4
♊	1	2	6	4	13
TOTAL ♂ DOMIC..	5	12	11	5	33
♌	3		1		4
♈		1	7	1	9
♉	6		4	6	16
TOTAL ♂ DETR.	9	1	12	7	29



As we can see there is not a meaningful difference between Mars in his domiciles or in his detriments in both groups.

If we pay attention, though, we can observe that Group II has much more cases of Mars in his dignities *in the 4th House* (that is linked with family, but also death, the beginning and the end). In the same way though, Mars in the Seventh House out of its dignities seems to be so good as when domiciliated in the 4th.

This can be explained because the 4th house has to do with family, and a protective family environment can cause longevity. In the other way around Mars in the 7th is like a weapon against the native and, if the weapon is weak it can be better for the ASC.

In fact Mars out of his dignities in the 7th house appears predominantly in cold and wet signs, Cancer and Taurus, where he perhaps lose his destructiveness related to his extreme heat and dryness. This is a speculation but it is worthy to think about.

Final Words

The results obtained in general are not a total surprise, but they are important as a reminder to not judge a chart based on few testimonies. We saw also that if the presence of Saturn in an angle and out of his dignities is not a good thing to the chart in general it can't stand alone as a bad testimony against life.

Anyway the presence of Saturn in his dignities is much more reassuring; we can see that clearly through the obtained results.

Mars in angles, though, in bad or good celestial state does not say much, but maybe Mars in cold and wet signs do not act so badly for life.

The reader can speculate a lot and I had the temptation of doing it myself: but we have always to remind that we need a larger population to study in order to reach a real conclusion.

Clelia Romano, DMA

